

Quick Guide



MioTM
explore more

Mio MiVue 128

01 Package Contents

When you open the package, please confirm that all the following accessories are included.



02 Installation mode for car use

※ Please format the MicroSD card with the Mio application software format function before inserting it. When formatting is complete, please first set the recording conditions according to your usage environment, for example switching between day and night modes, time, recording time setting etc. (please refer to steps 4 and 5 for the settings)



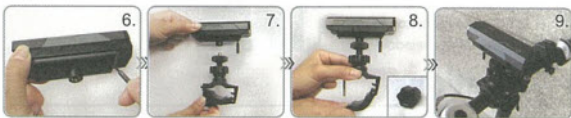
1. Please use Class 6 or higher class MicroSD cards.
2. Attach the car use mounting frame.
3. Combine the holder with the mounting frame and attach it on the windshield.
4. Start the car engine; plug the DC jack of the car adaptor into the main device and the other end to the car's cigarette lighter.
5. Adjust the setting angle to get the best view.

03 Installation mode for bicycle use

※ Please format the MicroSD card with the Mio application software format function before inserting it. When formatting is complete, please first set the recording conditions according to your usage environment, for example switching between day and night modes, time, recording time setting etc. (please refer to steps 4 and 5 for the settings)

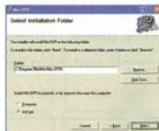



1. Please use Class 6 or higher class MicroSD cards.
2. Use your fingertip to push the battery cover towards the direction which the word PUSH indicates to easily open the battery cover.
3. Insert two AAA batteries according to the directions indicated.
4. Attach the holder onto the bottom of the device.
5. Pull the silicon holder down from front to back to wrap it around the device (you can decide whether to use the silicon holder or not).



1. Use the hand screw to tighten and firmly hold the bottom holder and the device in place.
2. Combine the bicycle holder with the device with the bottom holder attached.
3. Loosen the screw, select a suitable latch height and attach it to the bicycle, and then tighten the screw again.
4. Adjust the setting angle to get the best view.

04 Installation of application software



1. Insert the CD-ROM into your computer. The system will automatically pop up the setup window you can also double-click on "Setup.exe" from the CD-ROM drive.
2. Click "Next" to continue installation. When the application software is finished installing, the corresponding shortcut icon will appear on the desktop.
3. Remove the used MicroSD card from the device and connect it to the computer. Double-click the icon  on the desktop to run the application program.

05 System Setup



1. Remove the MicroSD card from the device and connect it with the computer, and then execute the software.
2. Click on the tools icon to open the System Setup window.

06 Indicators



- Low power indicator
- Recording indicator
- GPS indicator

07 Product Operations



Mode 1: GPS positions first then records. Press and hold down the power button for 1 second, you will hear a beep; GPS will start positioning and when positioning is complete, recording starts.

Mode 2: Activate recording. When in mode 1, press and hold down the power button for 1 second, you will hear a double-beep; system will enter the manual recording mode and starts recording. **Powering Off:** In either mode 1 or mode 2, press and hold down the power button for 3 seconds to power off the device.